

## CENTRAL BEDFORDSHIRE COUNCIL

At a meeting of the **SOCIAL CARE, HEALTH & HOUSING OVERVIEW & SCRUTINY COMMITTEE** held in Committee Room 1, Council Offices, High Street North, DUNSTABLE, Bedfordshire LU6 1LF on Thursday, 5 November 2009

### PRESENT

Cllr Miss A Sparrow (Chairman)  
Cllr A M Turner (Vice-Chairman)

Cllrs Mrs J Freeman  
P Freeman  
Mrs R B Gammons  
Mrs S A Goodchild

Cllrs Ms A M W Graham  
J Kane  
P Rawcliffe

Members in Attendance: Cllrs Mrs R J Drinkwater  
Mrs C Hegley

Officers in Attendance:	Mrs P Coker	– Head of Partnerships
	Mr D Jones	– Assistant Director Commissioning
	Mr H Khan	– Head of Housing Needs
	Mrs J Ogley	– Director of Social Care, Health and Housing
	Ms M Peaston	– Senior Democratic Services Officer
	Miss C Powell	– Overview and Scrutiny Officer
Others in Attendance	Mr A Morgan	– Chief Executive, NHS Bedfordshire
	Ms S Sherratt	– Communications Manager, NHS East of England
	Mr I White	– Strategic Projects, NHS East of England

#### SCHH/09/65 **Apologies for Absence**

There were no apologies for absence.

#### SCHH/09/66 **Minutes**

The minutes of the meeting held on 15 October 2009 were approved as a correct record and signed by the Chairman.

#### SCHH/09/67 **Declarations of Interest**

There were no declarations of interest.

**SCHH/09/68 Chairman's Announcements and Communications**

The Chairman, with the Committee's agreement, changed the order of the agenda to bring forward item 13 Bedfordshire and Luton Partnership NHS Trust (BLPT) Tender Process – Project Handover Update. This was in view of visitors who were attending only for this item.

**SCHH/09/69 Petitions**

No petitions had been received.

**SCHH/09/70 Public Questions, Statements and Deputations**

There were no questions, statements or deputations from the public.

**SCHH/09/71 Disclosure of Exempt Information**

No matters of exempt information were anticipated.

**SCHH/09/72 Call-in**

There had been no matters of call-in for consideration.

**SCHH/09/73 Requested Items**

There were no specific requested items.

**SCHH/09/74 Bedfordshire Local Involvement Network (LINK) Update**

The Committee noted the report which had been submitted by the Interim Vice-Chairman and Finance Officer of the LINK.

**SCHH/09/75 Bedfordshire and Luton Partnership NHS Trust (BLPT) Tender Process - Project Handover Update**

The Committee received a report of the Interim Assistant Director – Commissioning and a presentation given by Ian White, Strategic Projects Manager, NHS East of England. The slides are attached at **Appendix A**.

It was noted that a S75 Agreement would need to be signed in due course with the successful bidder. A common framework would be sought for all three participating local authorities with an appendix specific to Central Bedfordshire Council.

It was noted that particularly as there were current concerns about mental health service provision, the Council was eager to work with the new provider. Dr Patrick Geoghan had indicated that he was willing to address the Committee on mental health services in Bedfordshire and Members concurred that it would be appropriate for this to be programmed for January or February 2010. Members also welcomed the opportunity to visit some of the places where mental health services were provided.

The Chief Executive of Bedfordshire PCT explained concerns regarding control of the mental health service's assets together with the approach which had been adopted. It was noted that controls had been put in place to ensure that if an out-of-area provider delivered services they would not be able to take assets with them when they left. Assurances were being provided to the Co-operation and Competition Panel accordingly.

The Portfolio holder for Social Care and Health commented that in her recent visit to Weller Wing and Townsend Court she had seen improvements resulting from considerable refurbishment. This had proved so beneficial that a positive impact had been made on the length of stay of patients. The Director added that the shift in staff morale had been transformational.

**RESOLVED:-**

1. to note the report and the presentation;
2. to record the Committee's recognition of the innovative nature of the transaction to secure the delivery of mental health services in Bedfordshire, the first of its kind in the UK, and the achievement of design and delivery of a preferred bidder in less than 6 months from commencement of the project in February 2009;
3. subject to BLPT and Commissioner approvals, to support proceeding to signing of the contract;
4. that in the event of matters arising in the course of reaching contract finalisation which required a material change to the tender specification, the Committee would be supportive of such steps as were necessary to resolve matters for example requesting bid clarification and/or re-submission where appropriate, the re-evaluation of bids and, if necessary, the replacement of the preferred bidder with the reserve bidder;
5. to review progress in relation to the new management arrangements for local mental health services in January or February 2010.

**SCHH/09/76 Overview of Central Bedfordshire Council's Adult Services System**

The Director delivered a presentation which provided an overview of the Council's Adult Services system. The slides are attached to these minutes at **Appendix B**.

In response to a question, clarification was given regarding waiting times for occupational therapy assessments. It was noted that a considerable backlog had been inherited from the legacy authority which had now been addressed. Work was currently being undertaken on applications made during 2009. Central Bedfordshire Council was working with NHS Bedfordshire to develop an improved Occupational Therapy service.

A question was asked as to the impact on residents in relation to plans for the Wingfield unit. Members noted that several of the units were not in use and that work was underway in improving delivery of units of sheltered care. Members also noted that there was a need to develop the Authority's extra-care sheltered units. As the numbers of people with dementia increased, more dementia placements would be needed.

It was also noted that many of the people in need of support are self-funding and that supporting them through providing information and advice was part of the Council's welfare responsibilities.

In response to a question regarding measuring the outcome of providing grants it was noted that every Council grant in relation to adult social care had been logged and would continue this year. The impact of the grants would be assessed and reviewed in the future.

In relation to a question as to whether there were sufficient staff to deliver adult care services the Director advised that an exercise was being undertaken to ensure that the right staff were in place to carry out the necessary work. Improvements would be sought and training and development would be addressed. It was noted that a request had been made across the Council for interim and agency staff to be reduced. The Director commented that this would be difficult in Adult Social Care as those posts needed to be covered.

A discussion ensued regarding the difference between "entitlement" and "eligibility" and comments were made in support of people who had paid National Insurance contributions all their working lives but who might not be able to access the care they needed. It was noted that the Government's Green Paper, to be considered later on the agenda today, was proposing that although there would still be eligibility criteria, the entitlements arising from assessments would be portable to anywhere else in England.

The Chairman agreed to accept a question from Les Ford, a member of the public and of the Way Forward Panel. Mr Ford commented that the Government Green Paper would affect a lot of people and that in his view public consultation had been inadequate. He asked for information on the Green Paper to be brought to the Panel to enable discussion there, and the Panel's views and recommendations would then be sent back to the Council. The Director indicated that she was willing for an officer to attend the Panel and asked that such arrangements be made.

Members noted that the BUPA contract would end in 2010 and that work was being undertaken to look at the BUPA contract.

**RESOLVED:-**

1. to note the presentation;
2. that the slide in relation to Fair Access to Care (Eligibility Criteria) be sent in readable format to all members of the Committee;

3. that arrangements be made for an appropriate officer from the Social Care, Health and Housing Directorate to attend the Way Forward Panel to enable fuller consultation and clarity regarding the Government's Green Paper on adult social care.

#### SCHH/09/77 **Green Paper - Shaping the Future of Care**

The Committee received a report summarising options proposed in the Government's Green Paper *Shaping the Future of Care*. The report also set out a draft response to the Government's consultation which would inform the White Paper to be published in 2010.

The Director pointed out that there was an assumption in the Green Paper that people's own homes may be used for payment of residential care. The Committee was aware that many people were very much against this.

It was also noted that currently local priorities could be woven into the national strategy for adult social care but this could be lost if the proposals in the Green Paper for central determination of care budgets were adopted.

A comment was made indicating concern at the speed of Government timetabling of this matter which had been undertaken at the very end of its term of office before the next election. Comments were also made criticising the narrowness of the Government's consultation.

The Director read out to the Committee the recommendations which the Portfolio holder for Social Care and Health would be presenting at the next meeting of the Executive. Support was expressed generally by members of the Committee to these recommendations.

#### **RESOLVED:-**

1. to consider the proposals made in the Government's Green Paper and the potential impact on the future provision of adult social care in the Central Bedfordshire area;
2. to support the Portfolio holder's recommendations to the Executive in relation to the Green Paper;
3. to note that the Council's response to the consultation together with responses from the public in the Central Bedfordshire area would be returned before the close of the consultation period.

#### SCHH/09/78 **Let's Rent - Housing Option**

The Committee received and considered a report detailing an innovative private sector housing option which would allow households a choice in

accessing a private sector regulated home with all the requisite support mechanisms for tenancy sustainment, if required.

The *Let's Rent* approach would provide a low cost and high quality alternative housing option which would not require expensive rent deposits but would instead make use of a unique insurance scheme to indemnify any losses for landlords.

Members noted that the scheme would enable greater stability in their homes for vulnerable households which would also lead to a reduction in changes in their children's schooling.

Members were assured that there were sufficient properties available for rent for the purposes of the scheme, and that the scheme would make use of high quality homes. In response to a question it was noted that in view of the exceptional nature of the scheme, it was hoped that approvals would be given to the payment of rents to landlords instead of tenants.

A typographical error in paragraph 10 was amended.

The Committee was assured that rigorous monitoring of the scheme would take place, on a monthly basis with landlords and on a weekly basis with internal officers and officers from Aragon Housing Association. A request was made that an update on the scheme be provided to the Committee in six months time.

Members indicated their support for the scheme and asked that their support be referred to the Executive.

**RESOLVED:-**

1. to note the report and commend the innovative nature of the scheme;
2. that the Committee would receive an update of the Let's Rent scheme in six months time;
3. to refer the Committee's support of this Housing option to the Executive when it considered the scheme.

**SCHH/09/79 Work Programme 2009-2010**

The Committee considered its amended Work Programme and noted that there were matters which had been raised during the course of the meeting which would amend it further.

It was also noted that the NHS Bedfordshire Strategy which had been the subject of a refresh would be submitted to the PCT's Board before being brought before the Committee in December.

A report on Substantial Variations in relation to consultation on NHS matters would also be brought to the Committee in December.

**RESOLVED** to note that the Work Programme would be amended to reflect the current position.

SCHH/09/80 **Date of Next Meeting**

**RESOLVED** to note that the next meeting would be held on Thursday 3 December 2009 at 10.00am, in Room 15 at Priory House, Shefford.

Chairman .....

Date .....

(Note: The meeting commenced at 10.00 a.m. and concluded at 12.00 p.m.)

This page is intentionally left blank





# Project Handover Central Bedfordshire Council – Social Care, Health & Housing Overview & Scrutiny Committee 5 November 2009





# Bedfordshire and Luton Mental Health and Social Care Partnership NHS Trust

## Our Objectives:

- Attain Foundation Trust status
- Provide safe, high quality health and social care services
- Operate in suitable facilities
- Maintain financial viability
- Deliver improved standards of service user care



# Delivering Foundation Trust status

BLPT asked the EoE to lead the process

Board keen to:

- drive up quality
- unleash innovation
- develop more responsive services
- support staff in developing excellence
- connect with their local community

# An inclusive project board

- Members
  - East of England Chair
  - BLPT
  - NHS Bedfordshire
  - NHS Luton
  - Bedford Borough Council
  - Carers and Service Users
- Observers
  - Monitor
  - CCP
  - Department of Health



# A Competitive NHS Process

- Objectives
  - ensure safe, high quality service
  - deliver improved service standards
  - maintain financial viability
  - deliver Foundation Trust Status
  - follow Transaction Manual and PRCC



# The Bottom Line for Mental Health Services

- To provide excellent, safe, sound, supportive, cost effective, transformational mental health services for the residents of Bedfordshire and Luton that promote independence, health, well-being and choice and are shaped by accurate assessment of community needs.



# Priorities For The Mental Health Tendering Exercise For Social Care Services

- Ability to demonstrate how social care statutory duties are Delivered
- Ability to demonstrate leadership for adult social care at all levels within the organisation, to achieve a culture of integration which goes beyond simple joint provision
- Ability to provide professional guidance and support systems for staff carrying out social care functions



# Joined Up Excellent Services

Ability to deliver services which fully integrate health and social care services including joined up assessment and service provision between health and social care agencies which promote recovery from illness maximising independent living through access to:

- ordinary housing
- transport
- leisure
- information and advice including financial advice and welfare benefits
- life-long learning

Ability to deliver services which will be seen as excellent by those who use or depend on them



# Consistent Safe And Transformational Services

- Ability to ensure that social care services offered to mental health service users are consistent and compatible with those provided to other care groups
- Ability to deliver the government agenda on transforming social care through the delivery and development of self-directed support systems and increased use of direct payments
- Ability to deliver services which safeguard vulnerable adults protecting them, from abuse, maltreatment, neglect, exploitation, discrimination, fear, harassment and hate crime

# We will achieve in NHS Bedfordshire and NHS Luton:

- Darzi
- Towards The Best Together
- A Healthier Bedfordshire
- World Class Commissioner Status
- Implementation of a Joint Mental Health Commissioning
- Strategies across Bedfordshire and Luton
- Excellent Service Users and Carers experience



## Ambition

- We will develop services based upon positive outcomes for our service users
- We will only commission services that will improve the well being of our community
- We will increase our provision of services in Primary Care providing more choice for service users, their families and GP's.
- We will commission state of the art specialist secondary care services to support this.
- We will commission more services in the community and reduce our use of hospital in-patient care



## Partnerships

- We have service users and carers working jointly with our commissioners
- We work closely and integrally with PBC's
- We have strong relationships with the third sector
- We are establishing collaborative relationships with our new unitary colleagues

## Process & Timetable

Action	Completed by
Receive Expressions of Interest	24 April 2009
Pre-qualifying Questionnaire Stage	22 June 2009
Invitation to Tender Returned	24 August 2009
Recommendation of Award	16 September 2009
Award Ratified by Commissioners, BLPT and NHS EoE	w/c 22 September 2009
Due diligence and contract close	1 October 2009 to mid-November 2009
Contract Award	27 November 2009
Implementation and Transfer	1 December 2009 to 31 March 2010
Service Commencement	1 April 2010



# Progress

- ITT stage complete following;
- Evaluation of 4 bids by a team of 24 evaluators in 5 workstreams
- Bidder presentations to
  - Service User and Carer Reference Group – 3 September
  - Board to Board – 10 September
- Project Board recommendation – 16 September 2009
- NHS Commissioner, BLPT & NHS EoE approvals - 22-44 September 2009

# ITT Evaluation

Bidder	Final Audited Score at 18 <sup>th</sup> September	Bidder Ranking
SEPT	72.7	1 <sup>st</sup>
Hertfordshire Partnership NHS FT	71.9	2 <sup>nd</sup>
Cambridgeshire and Peterborough NHS FT	52.0	3 <sup>rd</sup>
Camden and Islington NHS FT	50.7	4 <sup>th</sup>

# Recommendation

- 1st place and preferred bidder – SEPT
- 2nd place and reserve bidder – Hertfordshire Partnership NHS FT
- Both bidders have met all 3 pre-conditions





# Approvals

- NHS Luton – AM 21 September 2009
- BLPT – PM 22 September 2009
- NHS Bedfordshire - PM 23 September 2009
- NHS East of England – 24 September 2009

# Co-operation and Competition Panel

- Stage 1 outcome
  - “...that there is a realistic prospect that the acquisition of BLPT by any of the four short-listed bidders will result in a material adverse effect on patients and taxpayers, the CCP considers that further investigation is warranted and we will proceed to a stage 2 evaluation.”
- Stage 2 – to conclude no later than 11 January 2010
- We are working closely with DoH and Monitor to resolve questions

# Next Steps

- Conclude outstanding issues with SEPT
- Establish and implement transition plan
- Bidder due diligence and contract completion
- Full business case
- Parallel Assessment of merged organisation by Monitor

# Recommendations

- Affirm recommendation of the BLPT Handover Project Board
- Agree to preferred and reserve bidder arrangements, delegating authority to Project Board to proceed as required.
- Advise how best to continue engagement.



## Future Commitment to Scrutiny

- Details of Winning Bid to SCHH OSC 3<sup>rd</sup> December 2009
- Public Announcement 6<sup>th</sup> December 2009
- Successful Bidder undertakes to present to SCHH OSC within three months of Contract Award.
- Further review dates to be agreed.

  
**East of England**  
Strategic leadership for your local NHS

  
**Bedfordshire and Luton**  
Mental Health and Social Care Partnership NHS Trust

# Questions



The logo for Central Bedfordshire, consisting of a green circle with the text "Central Bedfordshire" in white, stacked vertically.

Central  
Bedfordshire

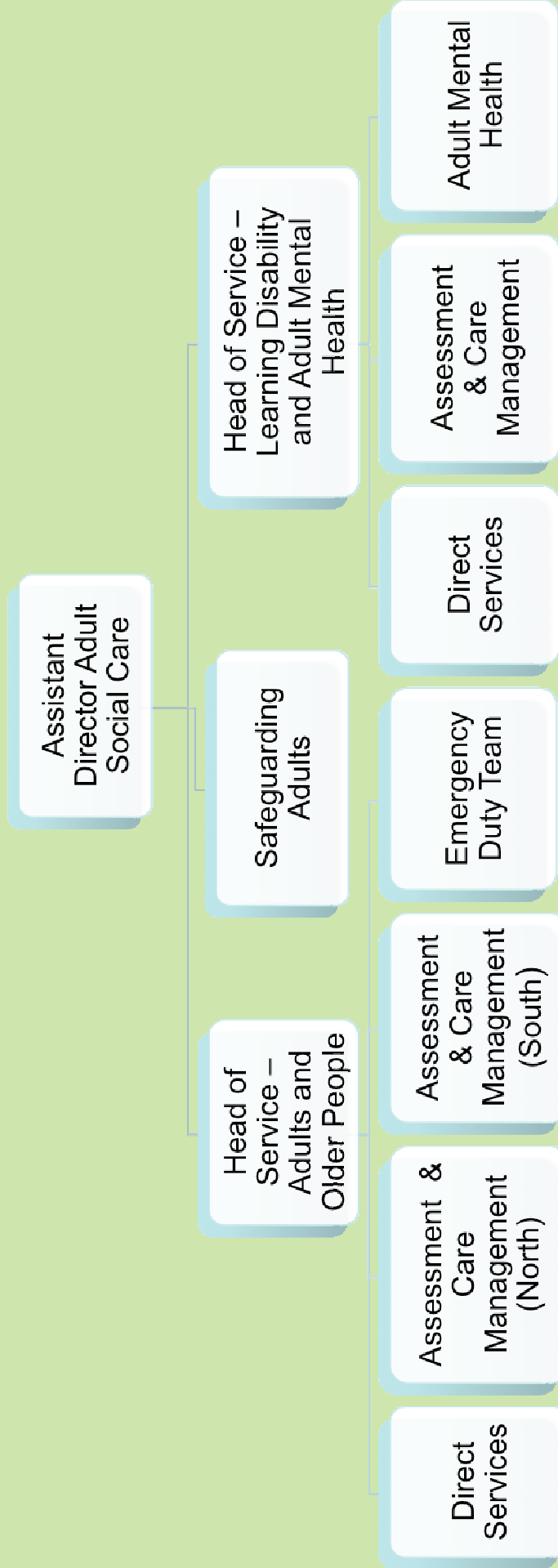
---

# **Social Care, Health and Housing Overview & Scrutiny Committee**

## **An Overview of Central Bedfordshire Council's Adult Services System**

**Julie Ogley – Director of Social Care, Health and Housing**

# Structure





# Budget



Central  
Bedfordshire

- Overall Net Budget – circa £42m (£46.5m)
- Older People - £21.2m
- Re-ablement - £2.8m
- Learning Disabilities - £13.5m
- Physical & Sensory Impairment – £3.6m
- Mental Health - £340k
- Grants/Payments to Voluntary Organisations

# Process



Central  
Bedfordshire

- Enquiry/Referral
- Sign Posting/information & advice
- Fair Access to Care – Eligibility Criteria
- Assessments
- Care Plan
- Resource Allocation
- Service Delivery
- Review/Monitoring

# Fair Access To Care (Eligibility Criteria)



<p><b>Critical – when</b></p> <ul style="list-style-type: none"> <li>• life is, or will be, threatened; and/or</li> <li>• significant health problems have developed or will develop; and/or</li> <li>• there is, or will be, little or no choice and control over vital aspects of the immediate environment; and/or</li> <li>• serious abuse or neglect has occurred or will occur; and/or</li> <li>• there is, or will be, an inability to carry out vital personal care or domestic routines; and/or</li> <li>• vital involvement in work, education or learning cannot or will not be sustained; and/or</li> <li>• vital social support systems and relationships cannot or will not be sustained; and/or</li> <li>• vital family and other social roles and responsibilities cannot or will not be undertaken.</li> </ul>	<p><b>Substantial - when</b></p> <ul style="list-style-type: none"> <li>• there is, or will be, only partial choice and control over the immediate environment; and/or</li> <li>• abuse or neglect has occurred or will occur; and/or there is, or will be, an inability to carry out the majority of personal care or domestic routines; and/or</li> <li>• involvement in many aspects of work, education or learning cannot or will not be sustained; and/or</li> <li>• the majority of social support systems and relationships cannot or will not be sustained; and/or</li> <li>• the majority of family and other social roles and responsibilities cannot or will not be undertaken.</li> </ul>
<p><b>Moderate - when</b></p> <ul style="list-style-type: none"> <li>• there is, or will be, an inability to carry out several personal care or domestic routines; and/or</li> <li>• involvement in several aspects of work, education or learning cannot or will not be sustained; and/or</li> <li>• several social support systems and relationships cannot or will not be sustained; and/or</li> <li>• several family and other social roles and responsibilities cannot or will not be undertaken.</li> </ul>	<p><b>Low – when</b></p> <ul style="list-style-type: none"> <li>• there is, or will be, an inability to carry out one or two personal care or domestic routines; and/or</li> <li>• involvement in one or two aspects of work, education or learning cannot or will not be sustained; and/or</li> <li>• one or two social support systems and relationships cannot or will not be sustained; and/or</li> <li>• one or two family and other social roles and responsibilities cannot or will not be undertaken.</li> </ul>

# Process

The logo for Central Bedfordshire, featuring the text "Central Bedfordshire" in white, stacked vertically, inside a green circle.

Central  
Bedfordshire

- Enquiry/Referral
- Sign Posting/information & advice
- Fair Access to Care – Eligibility Criteria
- Assessments
- Care Plan
- Resource Allocation
- Service Delivery
- Review/Monitoring

# Examples of Services



Central  
Bedfordshire

- Assessment
- Occupational Therapy
- Day Opportunities
- Domiciliary Care
- Supported Living
- Out of Hours
- Adult Placement
- Drugs & Alcohol
- Direct Payments
- Supported Employment
- Re-ablement
- Accommodation
- Care Homes
- Extra Care
- Information & Advice
- Sensory Services
- Safeguarding
- Carers Services

This page is intentionally left blank